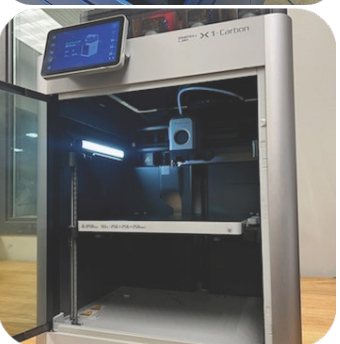
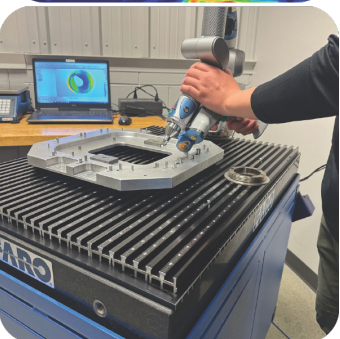
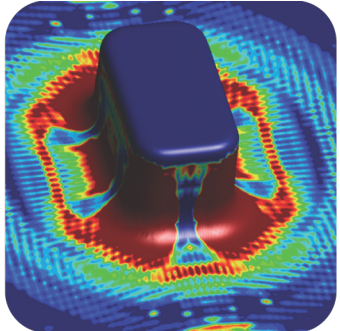
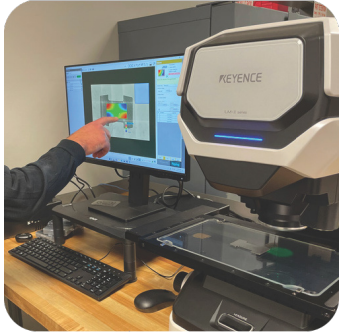


Ultra Tool & Manufacturing

EQUIPMENT LIST

Stamping - Sheet Metal Fab - Tool & Die



Management

ERP Software

- Plex
 - Data in the Cloud (SAAS)
 - Paperless Production
 - Mach2 Integration for IIOT

Operational System

- EOS Since 2015

US Government ID

- Cage Code OF1G3

Management System

- ISO 9001:2015
- IATF-16949 (2025)

Quality

- FARO Arm 3D Scanner
 - Blue Light
 - Reverse Engineering Software
- Keyence LM-X Multisensor Inspection
- Zeiss Contura 700 CMM
 - 27" x 39" x 23"

Engineering

Software

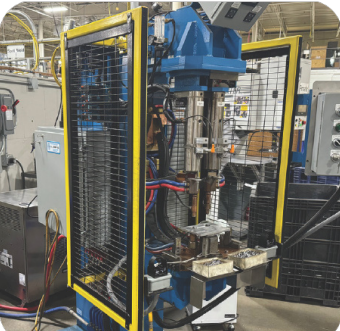
- VISI Progress 3D CAD/CAM
- Stampak Forming Simulation

3 D Printing

- Bambu Lab PETG-CF

• Bambu Lab X1

Manufacturing



SSDC Presses

- Minster P2-45 Ton
- (2) Minster P2-100 Ton
- Minster P2H-160 Ton
- (2) Minster E2-200 Ton
- Minster E2-300 Ton
- Minster FX2-330 Ton **SERVO**
- Minster E2-400 Ton
- Minster E2-800 Ton
 - Alternative Slide Motion

Gap Frame

- Stamtec OCP-110 Ton
- Aida NC2-160 Ton
- Aida NC2-250 Ton
- Greenerd 40 Ton

Custom Automation Machines

- Box Lug Machine
 - Automated Tapping Machine
- Governor Weight
 - Inspecting Machine
- Canopy Bracket
 - Semi-Automated Spot Welding

Special Machines

- Leak Testing
- Hi-Pot Testing
- Semi-Automatic Hole Inspection
- 100% Weight Test
- Video Runout Measurement

Hardware Insertion

- Haeger 824OTL-5He-60
- Pemserter 3000
- Autosert AS-7.5
- Autosert AS-15

Production Machining

- Brother TC-R2A Drill/Tap Machining
 - Pallet Changer
- RoboDrill D21LiA5
 - 21 Station Tool Holder

Resistance Welding

- Banner Spot Welder
 - 100 KVA
- Banner Spot Welder
 - 75 KVA
- Federal Spot Welder
 - 100 KVA
- TJ Snow Spot Welder
 - 100 KVA
- (2) TJ Snow Dual Head Spot Welder
 - 120 KVA
 - Slimline Dual Gun
- TJ Snow Platen-Style Spot Welder
 - 200 KVA
- TJ Snow Platen-Style Spot Welder
 - 200 KVA



Fabrication

Press Brake

- Durma ADS-30135 CNC Brake
 - 150 Tons, 10' Bed
- Euromac FX Bend CNC Electric Brake
 - 55 Tons, 60" Bed

Welding

- IPG Robotic 1500 W Laser Welder
 - UR Cobot
- Genesis CRZ-FT Robotic Welder
 - (2) Weld Stations 30" x 40"
- OTC FD-B6-S2 Robotic Welder
 - (2) Weld Stations 36" x 48"

Laser Cutting

- Mazak Optiplex NEO Fiber Laser
 - 7,000 Watts
 - Beam Shaping

Finishing

- Fladder Gyro 300 Sanding Machine
 - 51" Working Width



Tool Room

Vertical Mills

- Haas VF6 Vertical Mill
- (2) Haas VF3 Vertical Mill
- Feeler FV-2241 Bridge Mill
 - 55" x 85" Table
- Feeler HV-1000 Vertical Mill
- Track DPMRX3 Toolmaker Mill
- Agie VCE-800 Mikron Vertical Mill

EDM

- Agie VP3 Wire EDM
 - 41" x 25" x 16" HT
- Agie VP4 Wire EDM
 - 52" x 32" x 20" HT
- Charmilles HD 20 EDM Hole Drill

Lathe

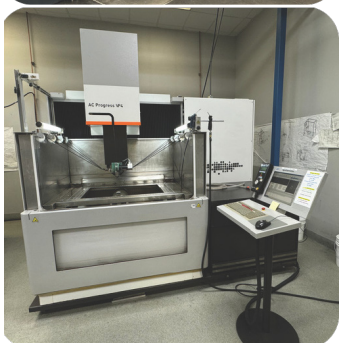
- TRAK 1845RX CNC Lathe
 - 45" Bed 18" Swing
- Moriseki
 - 54" Bed 20" Swing

Grinding

- Mattison Surface Grinder
 - 20" x 48"
- Blohm Percimat CNC Surface Grinder
- Faverito CNC Grinder
- Okamoto 1632 Grinder
- (2) Okamoto 1224 Grinder
- (3) Harig 6" x 18"
- (3) Mitsui 6" x 18"

Heat Treat

- Lucifer 82GT-P24 Atmosphere Furnace
 - 18" x 24" x 24"



Ultra Tool and Manufacturing, located in Germantown, Wisconsin, is the premier choice for precision metal part manufacturing.

We specialize in precision tooling, metal stamping, custom machining, and fabrication using cutting-edge technology and industry expertise. Committed to quality and innovation, we work closely with our customers to deliver exceptional results.

At Ultra Tool, customer satisfaction and tailored solutions are at the heart of what we do - let us help you turn your ideas into reality.



Leading the way with technical expertise

Scan here to
get started

